

## Flourish; Artwork by Looked After Children and Young People

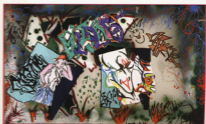
- Venue:** The Foundling Museum,  
40 Brunswick Square, WC1N 1AZ
- Date:** 9th - 22nd March
- Hsts:** Initiated by Newham Children and Young People's Services. March 2007 exhibition sponsored by Young London Matters as part of London Children Services Month
- Opening Times:** Tues-Sat 10am-6pm, Sun 12-6pm
- Entrance Fee:** Tickets on the door, Admission £5, Concessions £4, Children up to 16 years FREE

### The Exhibition:

Flourish provides a space for young artists, all of whom are looked-after in some way, to share their art practices with the public and each other. Some are cared for by grandparents, some are residents of care homes, some have been young offenders and foster carers or are adopted. The original exhibition in October 2006 was the first national exhibition to include young people with diverse experience of care.

The participating artists have a chance to speak to visitors about their artwork, receiving valuable feedback and encouragement. From Disney characters to graffiti, these pieces convey an involved and enthusiastic engagement with expressing what matters to them most.

[www.flourish-art.org](http://www.flourish-art.org)



**Louise White, Just a little hectic, 2006**

Spray paint, coloured pencil, paint, glue, permanent marker pen, 50 x 18cm

**Daniel Defoe, Wolf, from the series 'The World's Diversity'**

Graphite on paper, 32.5 x 29.7cm



**Amanda Murphy, Abstract Painting, 2004**

Acrylic paint, silver pen, card, straw, 18 x 13cm

